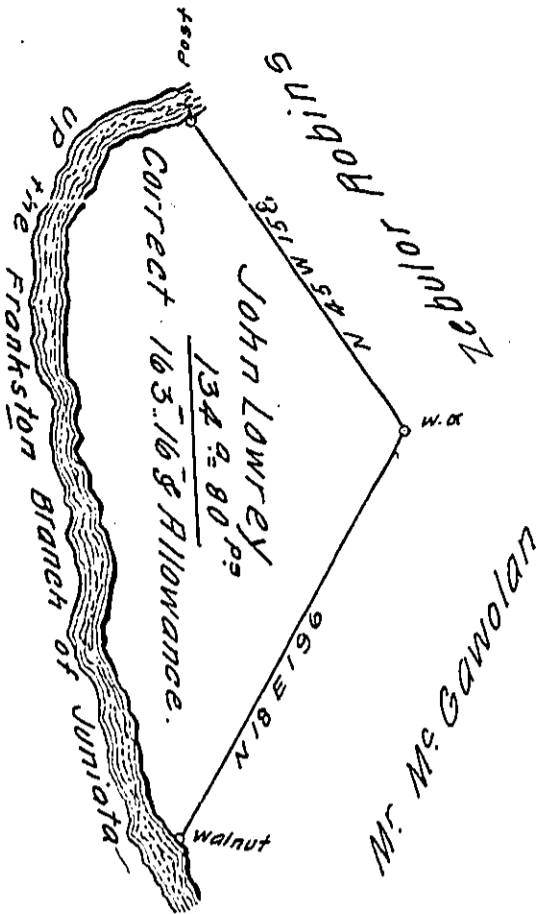


Courses & Distances  
up the ~~the~~ Juniata-

- S 60 W 37
- S 10 W 47
- S 11 E 45
- S 29 E 63
- S 12 E 41
- S 24 E 56
- S 27 E 49 To Walnut.



A Draught of a Tract of Land situate on the South Side of Juniata - & Surveyed by Richard Tea the 15<sup>th</sup> day of August 1767 by Warrant Dated the 10<sup>th</sup> Day of Septem<sup>r</sup> 1762. and Resurveyed the 31<sup>st</sup> of June 1785 Containing one hundred and ~~forty four~~ <sup>sixty three</sup> Acres and ~~16~~ <sup>16</sup> Perches and the Usual Allowance of Six Per Cent P<sup>r</sup> Roads &c.

To John Lukens Esquire S.G.

George Woods

D.S.

IN TESTIMONY that the above is a copy of the original remaining on file in the Department of Internal Affairs of Pennsylvania, made conformably to an Act of Assembly approved the 16th day of February, 1833, I have hereunto set my Hand and caused the Seal of said Department to be affixed at Harrisburg, this fourteenth day of September 1911.

*Mary Howell*  
Secretary of Internal Affairs.